



★ ★ ★ ★ ★ ★ ★ ★ ★ ★ ★ ★ ★ ★

CLASH

AN HOUR-LONG TV SERIES

★ ★ ★ ★ ★ ★ ★ ★ ★ ★ ★ ★ ★ ★





CLASH

AN HOUR-LONG TV SERIES

Introduction

On the eve of the American election, war is brewing between China and Russia as each side masses soldiers on their common border—all over a Chinese plan to divert a crucial water supply that currently supplies a key Russian agricultural center.

Each side is desperate to find out what happens in the American election because the Democratic candidate, Senator Frederick Thurston, supports the Chinese position while the Republican candidate, Florida Governor Sam Houston St. Clair, supports the Russians.

In a jolting development late on Election night, a tie in the Electoral College (something that's actually happened a couple of times in U.S. history) creates a

deadlock. The Constitution mandates that the newly elected House of Representatives, convening in January, will determine the election.

Late that Election night, incumbent Republican President Jeffrey Norwalk spends time alone in the Oval Office. Also up late is Norwalk's Aide for Congressional Liaison, Phil Slanetti, who has over the years built up a laundry list of dirt on members of Congress.

Norwalk meets with him and tells Slanetti to gear up to use the damaging information in the secret Keystone File to blackmail members of the House to vote for St. Clair.

They only have 8 weeks till the new Congress is sworn in.

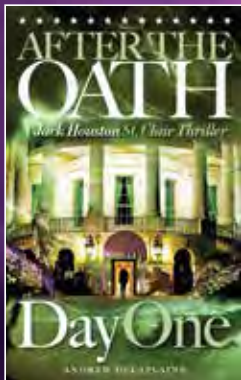


CLASH

AN HOUR-LONG TV SERIES

Source Material

The Andrew Delaplaine Novels





CLASH

AN HOUR-LONG TV SERIES



The Creator Andrew Delaplaine

Andrew Delaplaine is based on South Beach, Miami's Billion Dollar Sandbar.

In the late 1980s and into the 1990s, he and his sister Renee were part of the hardy group that helped South Beach turn the corner from slum to international destination (which has its good as well as bad angles to explore—it was a lot more fun when it was a slum). They owned a popular restaurant (Scratch), a weekly newspaper (The Wire) still published today, and a famous nightclub (The Warsaw Ballroom). A bumpy ride, but lots of fun.

At the same time, he also produced a weekly TV program for 5 years.

Delaplaine has written and directed three features (one doc, two narrative features), and won several awards for his film work. (See www.imdb.com for details). His latest film, "Meeting Spencer," starring Jeffrey Tambor, won the prestigious Milan International Film Festival Award for Best Screenplay.



CLASH

AN HOUR-LONG TV SERIES



The Team



CLASH

AN HOUR-LONG TV SERIES

Bruce D. Johnson

Bruce D. Johnson has been a producer and executive producer in Hollywood for 25 years. From writing, producing, directing, and executive producing, Johnson has been involved with every aspect of filmmaking including development, presales, financing, pre-production, production and post-production, in both live action and animation. He has also been involved in the marketing and distribution of movies to all markets domestically and internationally including theatrical, home entertainment, television and Internet. In 1994, Bruce founded PorchLight Entertainment and developed the company into a premier family entertainment enterprise. As producer, screenwriter or story editor, he has delivered over 40 original movies and over 1200 television episodes to networks and/or distributors throughout the world and has been honored with multiple Emmys as well as numerous other awards. His recent productions include Finding Mrs. Claus (Lifetime), The Perfect Catch, Autumn Dreams, Wedding Bells and The Long Way Home (for Hallmark), The Twelve Dogs of Christmas 2 (Sony) and Stranger in Town (Showtime). In March, 2011, he formed Foxfield Entertainment, an independent production, distribution, rights management and financing company based in Los Angeles. Mr. Johnson serves as consultant to the project.

Rick Daniels

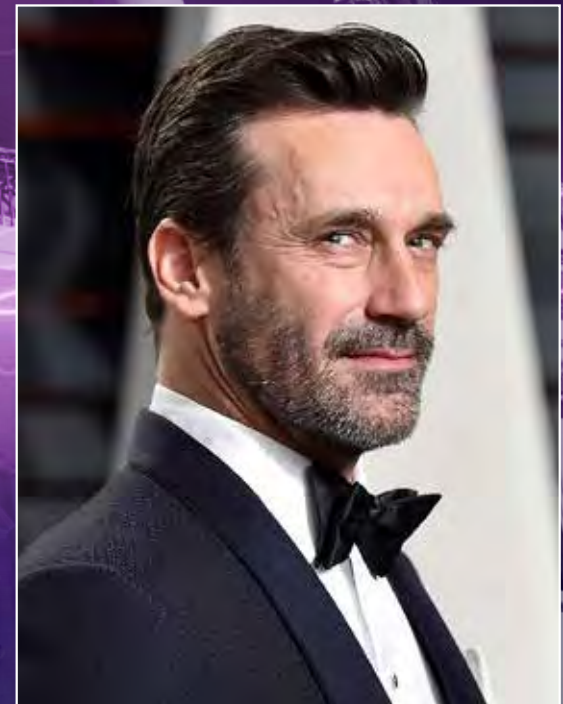
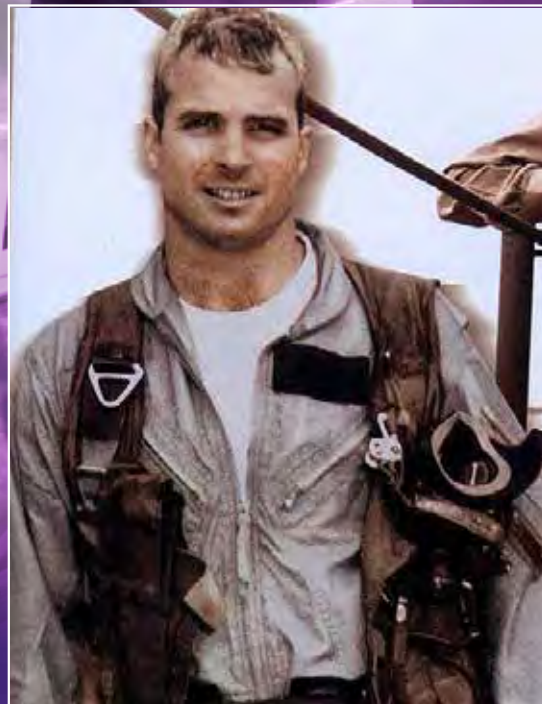
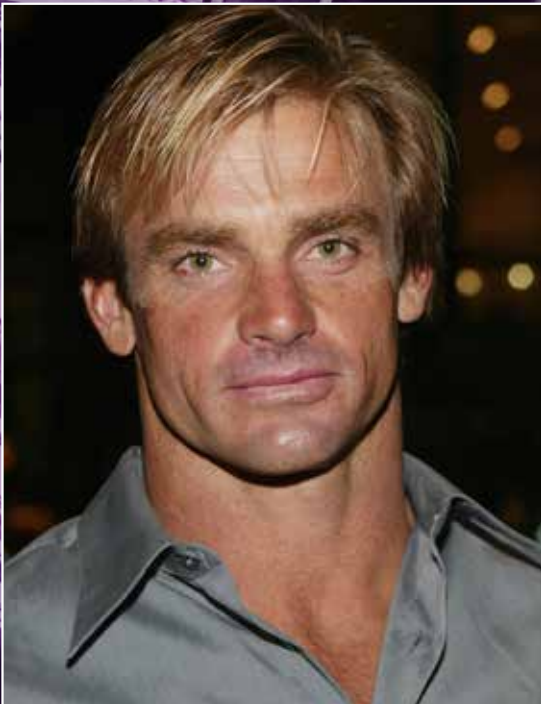
Rick Daniels is the CEO & President of Daniels McGowan Inc. of Miami Beach, Florida and San Antonio, Texas and has been active in feature film financing for nearly 3 decades. For over 21 years he served as the Managing Principal of Daniels McGowan & Associates, attorneys at law. The primary focus of the firm was matters before the Securities and Exchange Commission as well as general and international financial law. He founded Daniels McGowan Inc in 2004 to devote more time to the entertainment industry and is presently executive producer of two of the company's feature films, "A Taste of Freedom" and "A Circle on the Cross." Daniels McGowan Inc. focuses on matters of international business, finance and trade especially in the motion picture and television industries. Because of his innovative work in the area of exporting intellectual property Mr. Daniels was appointed to the District Export Counsel (DEC) by Penny Pritzker, then the Secretary of Commerce of the United States. His term ends on December 31, 2019.



CLASH

AN HOUR-LONG TV SERIES

Jack Houston St. Clair Character Type



Casting Types



CLASH

AN HOUR-LONG TV SERIES

Jack Houston St. Clair

An ex-Navy SEAL, Jack is the son of Florida Gov. Sam Houston St. Clair. He lives in a house on the family-owned island in Miami's Biscayne Bay. Besides running all operations on the island, he runs a detective agency and helps his father out when political disasters engulf him.



CLASH

AN HOUR-LONG TV SERIES

Eve Harrington Character Archetype



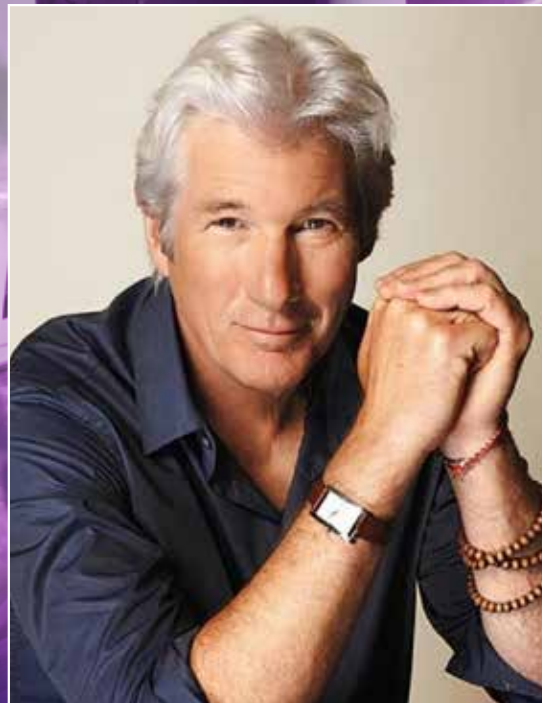
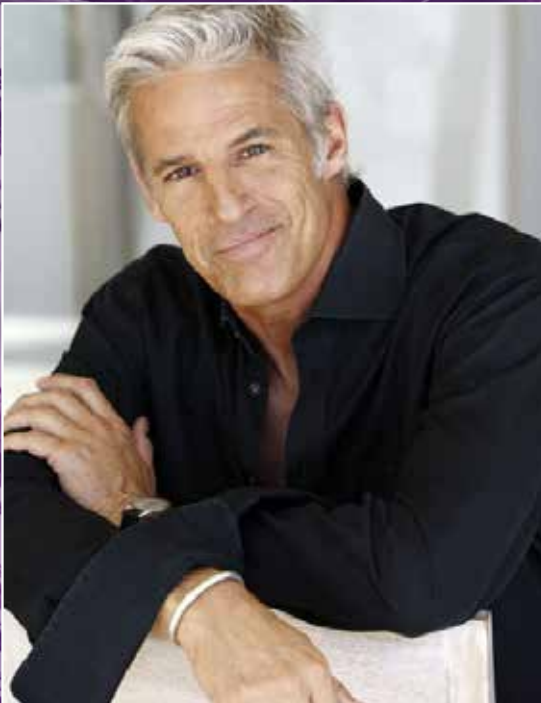
Eve Harrington is curator of antiques at the Governor's Mansion when she meets Sam Houston St. Clair. Invited to Miami to inspect the antiques in Sam's mansion on St. Clair Island, events overtake the couple and by the end of Season One they become engaged to be married and she's looking forward to becoming First Lady.



CLASH

AN HOUR-LONG TV SERIES

Sam Houston St. Clair Character Type



Patriarch of the wealthy St. Clair family, Sam, the Florida governor, is also the Republican candidate for President, trying to defeat Democratic Senator Fred Thurston. When the Electoral College is deadlocked, he heads off to Washington to work with incumbent President Jeffrey Norwalk to sway members of the House to vote for him. He is not aware that Norwalk—working with his aide Phil Slanetti, is blackmailing members to vote for him.



CLASH

AN HOUR-LONG TV SERIES

Babylon Fuentes Character Type



Babe Fuentes, Jack's girlfriend, is one of three daughters of a prominent Cuban family in Miami. Her stormy relationship with Jack is complicated by the fact that her older sister, Raven Fuentes, was Jack's lover two years earlier. She has something to prove.



CLASH

AN HOUR-LONG TV SERIES

Season One

Beginning on Election Night when there's a tie vote for President, the action moves to Washington, where Sam installs himself in a suite at the Willard to start meetings with all the congressmen who are on the fence about their votes. Since each state gets only one vote, the bean counters quickly figure out who the most important players are.

Sam doesn't know Phil Slanetti is working behind the scenes using the dirt in the Keystone File to blackmail key members of state delegations they need to win the vote. He's helped by British Ambassador Ellsworth and Russian Ambassador Kornilevski.

Jack, also in D.C. to help his dad, gets called back to Miami to deal with a narco-sub his team finds out has sunk off Key West.

Jack's heated relationship with Babe Fuentes also plays into the story. It's bad enough that her older sister Raven was Jack's lover, but now her younger sister, Antonia, is discovered to be sleeping with Rafael St. Clair, Jack's younger brother, a Coast Guard lieutenant.



CLASH

AN HOUR-LONG TV SERIES

The Setting

Beginning in Miami on Election Eve when there is a tie for President, the setting moves back-and-forth between Miami and Washington as Sam and his team move to D.C. to try to convince a majority of Congressmen to vote for Sam over his opponent.

Jack is forced to split his time between the two cities when he gets involved in a case that leads him to a narco-sub recently sunk off the coast of Key West. Russian mobsters that own the biggest club on South Beach are trying to recover the \$65 million in cash that went down with the sub, but Jack and his team get lucky and beat them to it.



CLASH

AN HOUR-LONG TV SERIES

The People



PRESIDENT JEFFREY NORWALK is the incumbent and ruthlessly sets out to do whatever it takes to get Sam elected as his replacement.



PHIL SLANETTI is Norwalk's aide for Congressional liaison and the keeper of the Keystone File.



VLAD KUCHEROV is the front man for Kremlin, the biggest club on South Beach. He's also a Russian secret police operative.



CLASH

AN HOUR-LONG TV SERIES

Contact

Rick Daniels

danielsmcgowan_nyc@yahoo.com

210-213-5683

Bruce D. Johnson

bruce@foxfieldentertainment.com

818-532-1500

Andrew Delaplaine

andrewdelaplaine@mac.com

786-417-2902



CLASH

AN HOUR-LONG TV SERIES

Thank You

